



Alaska Tribal Conservation Alliance

May 7 - 8, 2019

Anchorage AK

The background features abstract, overlapping geometric shapes in various shades of green, ranging from light lime to dark forest green. These shapes are primarily located on the right side of the frame, creating a modern, layered effect. The rest of the background is plain white.

Bryan J Scoresby
State Executive Director

USDA/Farm Service Agency

- ▶ Mission Statement
- ▶ Farm Service Agency is equitably serving all farmers, ranchers, and agricultural partners through the delivery of effective, efficient agricultural programs for all Americans.

Agency/Internal Vision

- ▶ A customer driven agency with a diverse and multi-talented work force, dedicated to achieving an economically and environmentally sound future for American Agriculture

Societal/External Vision

- ▶ A market-oriented, economically and environmentally sound American agriculture delivering an abundant, safe, and affordable food and fiber supply while sustaining quality agricultural communities.

Values

- ▶ The foundation of FSA's mission and vision rests upon the USDA's long-standing core values of:
- ▶ Strong Ethics
- ▶ Customer Service
- ▶ Team Work
- ▶ Inclusive Decision-Making and
- ▶ Fiscal Responsibility

Farm Loans

1. Farm Ownership Loans
2. Farm Operator Loans
3. New Farmer Loans
4. Youth Loans

Servicing Loans

- Re-amortization, rescheduling, consolidation, and/or deferral of loan
- Rescheduling of the limited resource (lower interest) rate
- Acceptance of conservation contracts on environmentally sensitive land in exchange for reduction in debt
- Writing down the debt (delinquent borrowers only).

Who may Borrow?

- Be a family farmer
- Have a satisfactory history of meeting credit obligations
- **For Direct loans**
 - Have sufficient education, training or 1 year's experience in managing a farm
 - Be active in farming for 3 of the last 10 years
 - Be a citizen of the United States
 - Be unable to obtain credit elsewhere
 - Possess legal capacity to incur debt
 - Not be delinquent on any federal debt
 - Not have caused FSA a loss on a prior loan

Supervised Credit

- ▶ FSA's mission is not limited to providing just credit.
- ▶ It is to provide supervised credit.
- ▶ FSA works with each borrower to identify specific strengths and opportunities for improvement.
- ▶ Works with the borrower on alternatives to achieve success.
- ▶ Improved business planning and financial acumen through supervised credit is the difference between success and failure for many farmers.

Farm Storage Facility Loans

- ▶ Low interest loans to build or upgrade farm storage and handling facilities
- ▶ Including cold storage
- ▶ Up to \$500,000 with 5% down
- ▶ Up to 20 years
- ▶ Micro loans up to \$50,000 with 5% down
- ▶ Three, 5 or 7 years

RTCP

(Reimbursement Transportation Cost Program)

- ▶ Alaska, Hawaii, Porto Rico, US Territories and Islands
- ▶ Costs of inputs (fertilizer, seed) are higher here
- ▶ Costs of getting product to market
- ▶ Provide proof of amount of costs incurred for transportation
- ▶ Comply with conservation and wetland protection
- ▶ Be a citizen and of legal age
- ▶ Note: Commercial fisherman are not eligible

Eligible Commodities

- ▶ Aquaculture
- ▶ Feed
- ▶ Fiber
- ▶ Floriculture
- ▶ Food
- ▶ Horticulture, including trees
- ▶ Insects or products thereof
- ▶ Livestock, including elk, reindeer, bison, horses and deer

Funding

- ▶ Provided by the Consolidated Appropriations Act
- ▶ \$1,996,000 was authorized for 2018
- ▶ The new farm bill has RTCP included currently in conference committee

Crop and Yield Reports

- ▶ History kept and recorded in FSA's database
- ▶ Prepare for what may come to your operation in the future
- ▶ Disaster programs historically are based on crop reports from prior years.

NAP

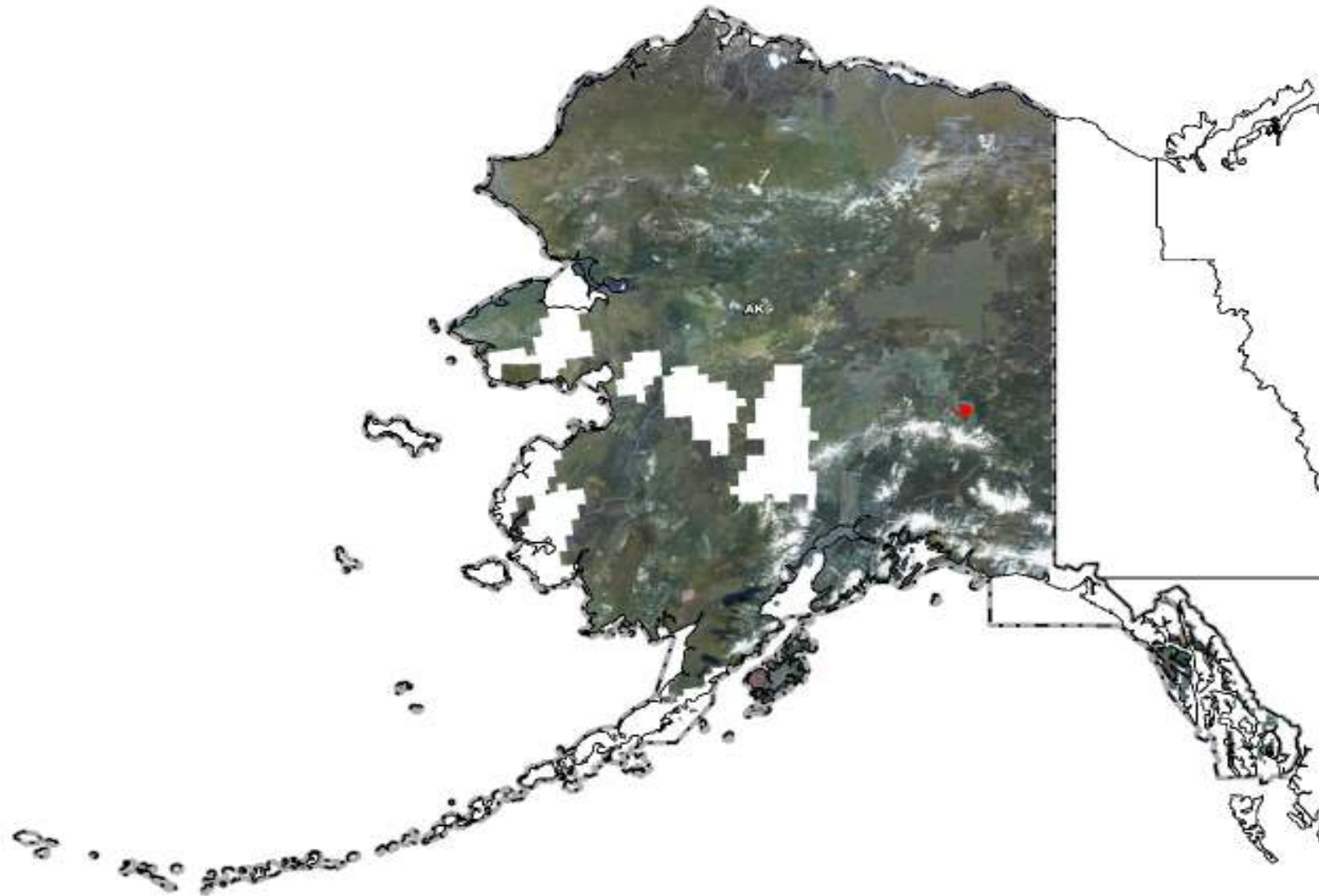
Noninsured Crop Disaster Assistance Program

- ▶ Authorized in 2014 farm bill
- ▶ Eligible crops are those where crop insurance is not available
- ▶ Producers can purchase and select higher levels of coverage
- ▶ Provides revenue protection if disaster strikes

Mapping Alaska

- ▶ Digitized maps are available in most of Alaska
- ▶ Contact local FSA office

Available Imagery in Alaska



Sister USDA Agencies we work with closely

- ▶ NRCS
- ▶ Rural Development
- ▶ Fish and Wildlife Services
- ▶ National Ag Statistics Service
- ▶ Risk Management Agency

Technical Assistance

- ▶ NRCS
- ▶ University Extension
- ▶ Soil and Water Conservation District

State of Alaska Division of Agriculture

- ▶ \$5.00 challenge
- ▶ Spend \$5.00 per week of your grocery budget on AK Grown food.
- ▶ Create a market for local grown food
- ▶ Encourage local food producers to expand
- ▶ Provides market opportunity for new producers

2018 Farm Bill

- ▶ Passed and signed in law December 2018
- ▶ No new programs for FSA to begin
- ▶ No old programs were taken away from FSA
- ▶ FSA is currently writing regulations to match the changes that were made
- ▶ Loan limits were increased.
- ▶ CRP acreage has been raised from 24M to 29M acres

USDA/FSA programs

- ▶ Come to us from statute (farm bill)
- ▶ FSA is tasked to write regulations for our local offices to administer to farmers and producers
- ▶ Sometimes our programs do not fit a persons operation
- ▶ We may or may not be able to help customer
- ▶ We will take your case to our national office for waivers in necessary
- ▶ FSA reviews the statute, compares it to written regulations to see if an operation can fit into a selected program

Text Alerts

- ▶ FSA issues text alerts to notify farmers/producers of immediate information, such as a program deadline for office closed for _____ holiday.
- ▶ No more than 2 text messages per month will be sent
- ▶ Any costs you incur due to receipt are your costs

- ▶ Text this message to: FSANOW (372-669)
- ▶ In the Subject line put: AKDeltaJunction or AKPalmer